

## Cisco VPN Any Connect Secure Mobility Client 3.0 [HRA] Connection Guide

Once the Cisco AnyConnect Secure Mobility Client [HRA] is installed on your machine you should be able to see the following icon on the task bar



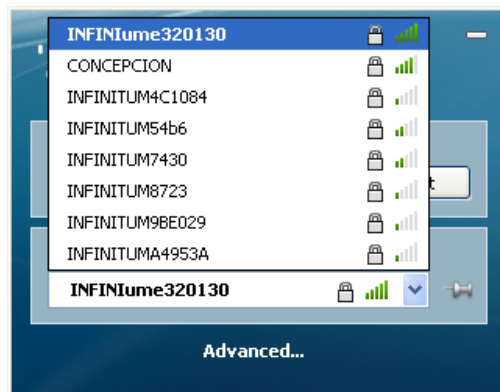
Cisco Any Connect Client Icon

Click on the icon for Cisco AnyConnect and it will pop-up the window as shown below. It has the **Network** Access Manager (currently connected to a wired connection) and the **VPN** section

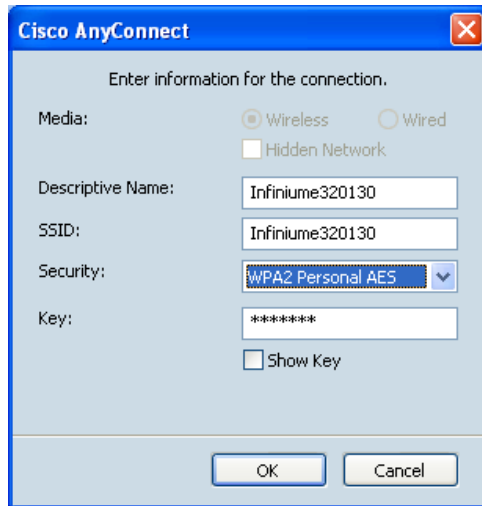
Network access manager automatically detects network on end user's machine based on the availability (wired, wireless, etc.)

In order to get connected to the HRA VPN using the Wifi follow the below instructions:

If this is the first time connecting to this WiFi network select the WiFi from the Network section in Any Connect.



Enter information for the connection including SSID, Security Privacy setting and Key



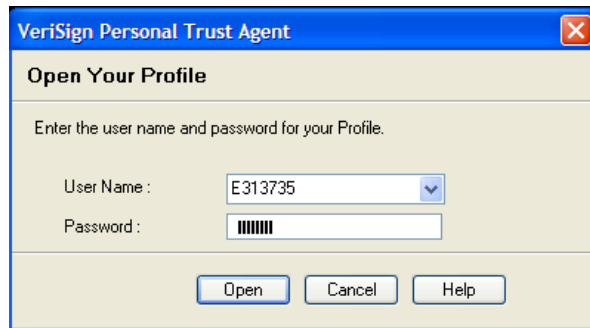
The image shows a 'Cisco AnyConnect' dialog box with the title 'Enter information for the connection.' It contains the following fields and options:

- Media:** Radio buttons for 'Wireless' (selected) and 'Wired'. A checkbox for 'Hidden Network' is also present.
- Descriptive Name:** Text box containing 'Infinium320130'.
- SSID:** Text box containing 'Infinium320130'.
- Security:** Dropdown menu set to 'WPA2 Personal AES'.
- Key:** Text box containing '\*\*\*\*\*'.
- Show Key:** A checkbox that is currently unchecked.

At the bottom of the dialog are 'OK' and 'Cancel' buttons.

After computer is associated with the WiFi network you will see IP address and status changes to "connected" in Network Access Manager. Now click on connect.





During the connection phase, VeriSign Personal Trust Agent will prompt for the password, which is nothing but your certificate password [formerly HGRA password] Enter password and click Connect

VPN tunnel will be established and user can connect to network resources they have permission to reach.

**NOTE** – Authentication method remains same for the HRA

After successful connection with the Cisco Any Connect client you should see the Cisco VPN icon as shown below –

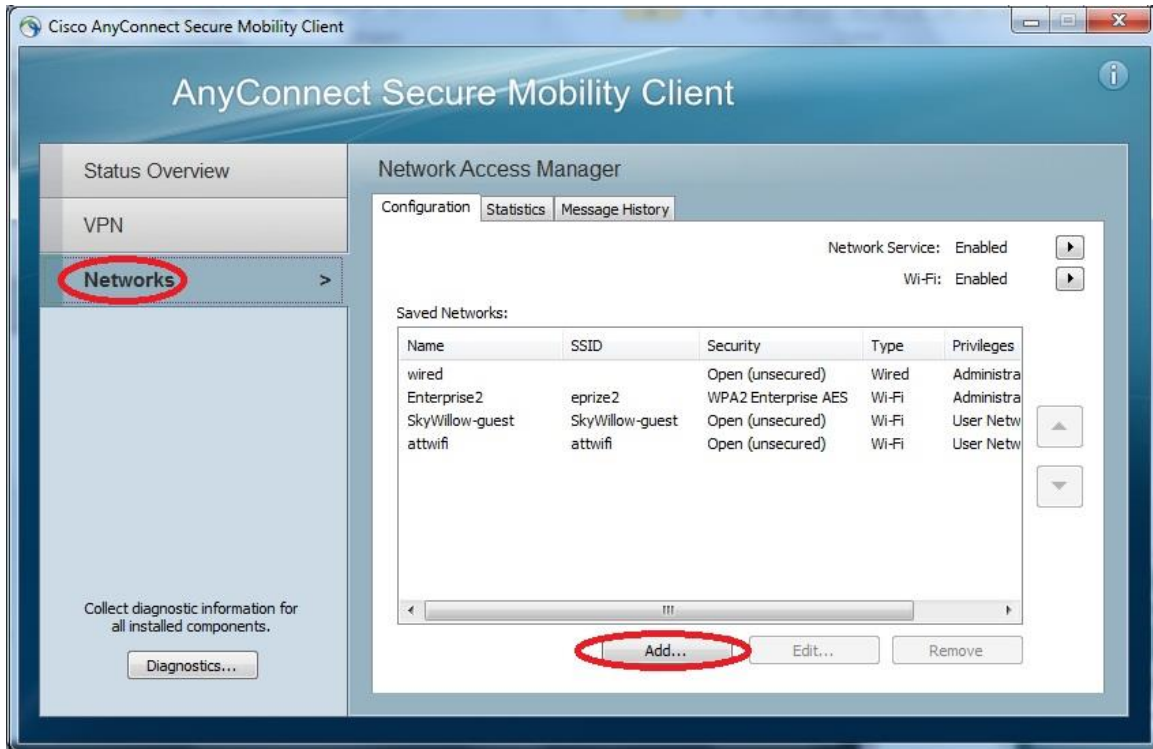


Cisco Any Connect Client Connected Icon

If this is the first time connecting to a Wi-Fi network and the network SSID is Non-Broadcast which cannot be detected automatically, click on the Advanced link in Any Connect Client.



On the Advanced popup window, Click Networks tab, to view the Network Access Manager Configuration tab



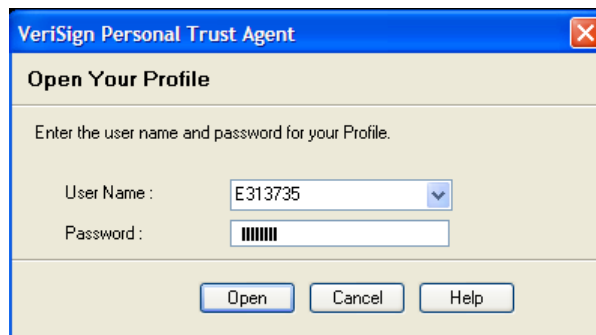
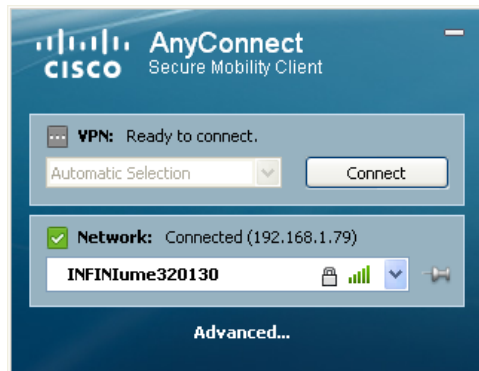
To add your Non-BroadCast network, click the Add button on the Configuration Tab.



1. Select Media will be on Wireless as default
2. Enter the Descriptive name for your network [i.e.Home] that will appear in the Any Connect Client Network Pulldown
3. Enter the SSID defined when your network was established
4. From the pull down list, select the security encryption settings designated for this network by the network's administrator
5. Enter the Key set for your encryption set for this network by the network's administrator
6. Click OK button

Click the Red X to close the Network Access Manager Configuration tab

After computer is associated with the WiFi network you will see IP address and status changes to “connected” in Network Access Manager. Now click on connect.



During the connection phase, VeriSign Personal Trust Agent will prompt for the password, which is nothing but your certificate password [formerly HGRA password] Enter password and click Connect

VPN tunnel will be established and user can connect to network resources they have permission to reach.

**NOTE** – Authentication method remains same for the HRA

After successful connection with the Cisco Any Connect client you should see the Cisco VPN icon as shown below –



Cisco Any Connect Client Connected Icon