

1).To enroll for a PKI 2 certificate for VPN / HRA authentication click on the link below to begin:

[Hon Private Identity](#)

2). Click the <Continue> button to proceed

The screenshot shows a web browser window with the address bar displaying <https://pki.symauth.com/certificate-service/?ac=137806&pf=2.16.840.1.113733.1.16.1.2.3.1.1.33302239>. The browser's address bar also shows 'Identified by VeriSign'. The page title is 'Symantec PKI Certificate Service - Confirm your identity - Windows Internet Explorer'. The page content is a dark-themed interface with the Symantec logo and 'PKI CERTIFICATE SERVICE' text. Below this, there is a navigation bar with 'Enroll:' followed by four buttons: 'Confirm your identity' (highlighted in yellow), 'Enrollment information', 'Install certificate', and 'Next steps'. The main content area is titled 'Confirm your identity' and contains the text: 'Before your certificate can be issued, you must confirm you identity by entering identifying information.' Below this text are two numbered instructions: '1. Click **Continue**.' and '2. Enter the requested information.' At the bottom right of the main content area is a yellow 'Continue' button. The footer of the page includes 'Legal Notices | Privacy' and 'Copyright© 2014 Symantec Corporation. All rights reserved.' There is also a 'Norton SECURED' logo in the bottom right corner. The browser's status bar at the bottom shows 'Trusted sites | Protected Mode: Off' and a zoom level of '125%'.

3). Enter your **EID** as the (Username) & LDAP password then click the Continue button

Confirm your identity

Enrollment information

Username:

Password:



Continue

- 4). Verify your information and click the <Continue> button to proceed:
(Note, your Certificate Nickname should show as **HON Private Identity**)

Verify your information

Verify that the information associated with your certificate is correct, and complete any required fields.

* Required information

Company	Honeywell International Inc
Common name	Anderson, Ward
Email address	Ward.C.Anderson@honeywell.com
Other Name (UPN)	Ward.C.Anderson@honeywell.com
Certificate nickname	<input type="text" value="HON Private Identity"/>  

If your information is incorrect, contact your certificate administrator.

ward.c.anderson@honeywell.com

Continue

- 5). Click the Install Certificate button once the system has confirmed your authentication

Install your certificate

Review these installation steps, and then click **Install certificate** to begin the process.

1

Either create a PIN or enter your existing PIN to protect your certificate:

- If this is the first certificate you are installing, create and confirm your PIN. You need to enter this PIN each time you use your certificate.

Remember this PIN!

If you forget this PIN, you will not be able to use your certificate, and you will need to repeat the enrollment process to install another certificate.

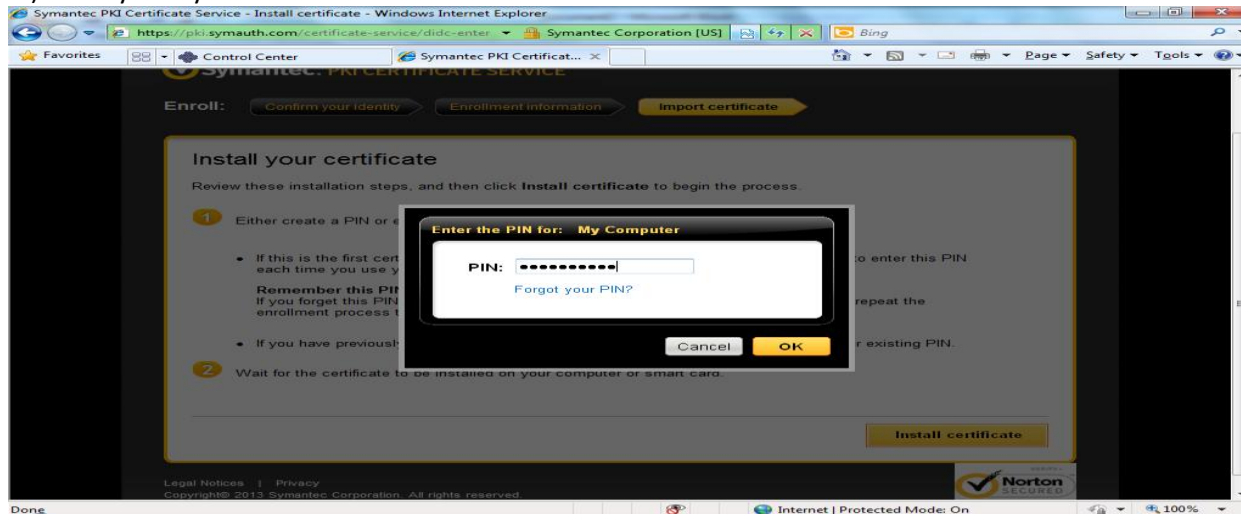
- If you have previously installed a certificate on your computer or smart card, enter your existing PIN.

2

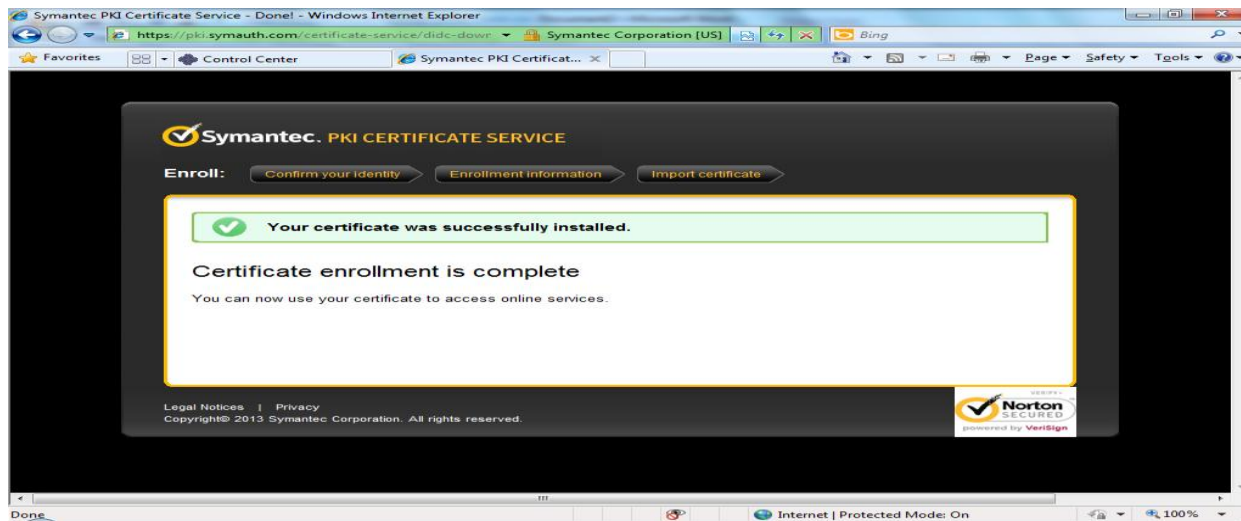
Wait for the certificate to be installed on your computer or smart card.

Install certificate

6.) Enter your Symantec PKI PIN and click <OK> to continue



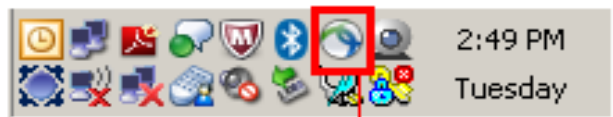
7). Please wait the allotted 30 – 90 seconds while your certificate is provisioned
Once you see the message that “Your certificate enrollment is now complete” close your browser and continue to the Post Enrollment steps below.



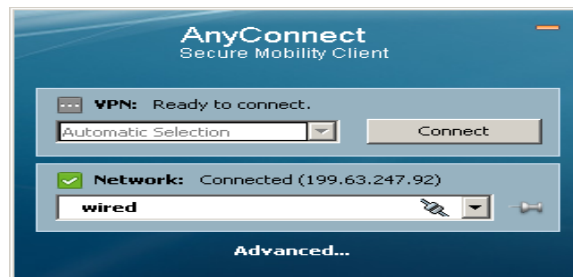
Please ensure that you configure your HRA VPN Cisco Any Connect client to utilize your new certificate prior to connecting to VPN initially with your new certificate enrollment. Post enrollment for HRA configuration steps may be found below.

Post enrollment HRA AnyConnect configuration steps

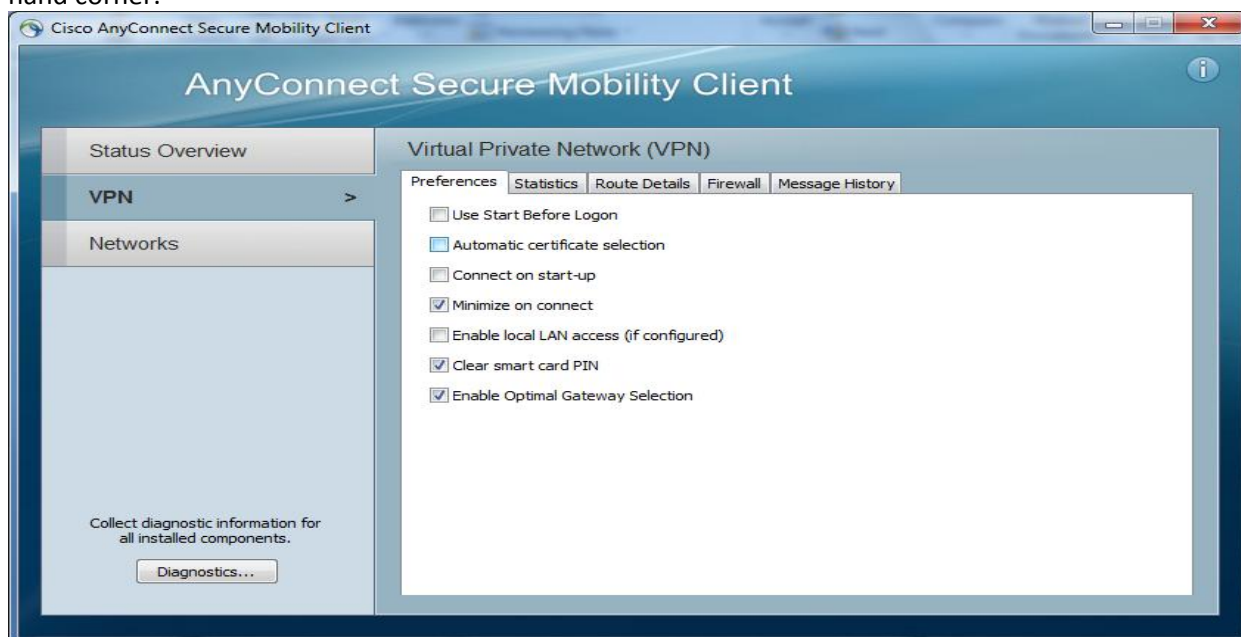
- 1). Connect to the network using your legacy PKI1.0 certificate and follow the below instructions to configure your client with the new PKI 2 certificate you have just enrolled for.
- 2). Once connected, open the HRA AnyConnect icon and choose the <Advanced...> option near the bottom of the AnyConnect Secure Mobility Client shown in the picture to the right.



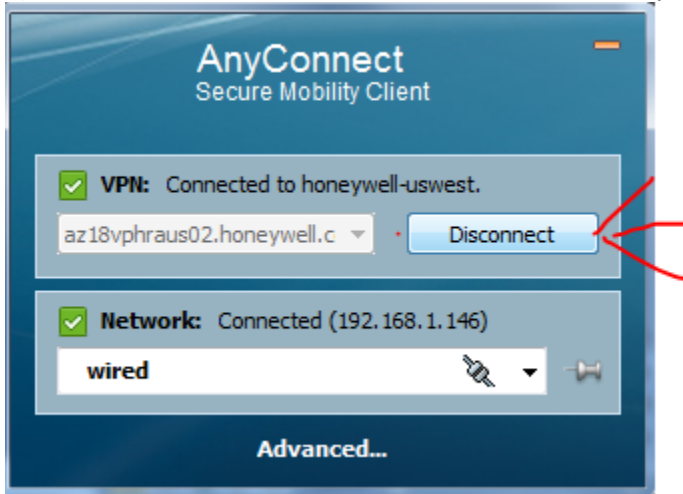
Cisco Any Connect Client icon



- 3). Click on the VPN menu option on the left side and choose the Preferences folder tab shown below.
- 4.) Uncheck the 2nd option 'Automatic certificate selection' then close the window using the red 'X' button in the upper right hand corner.



5). Disconnect from the network and close the HRA AnyConnect client then continue to the next step:



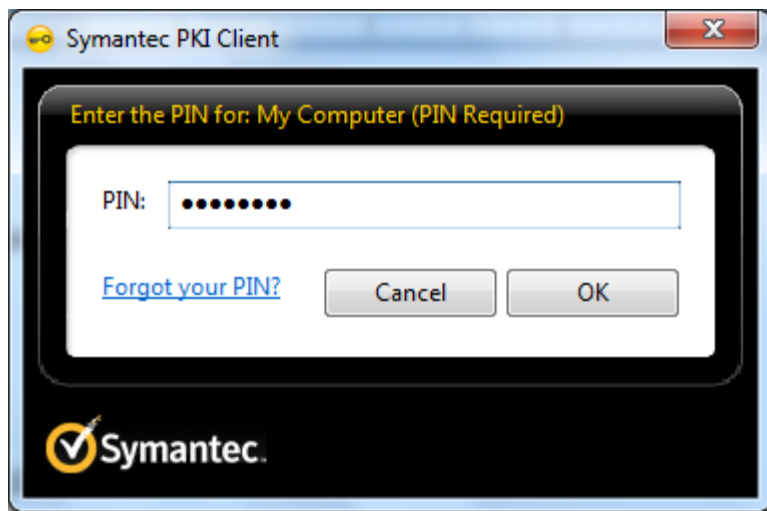
6). Open your HRA Any Connect client, then Click <connect> to continue



7). Choose your new certificate (named **HON Private Identity**) from the available list and click <OK> to connect.

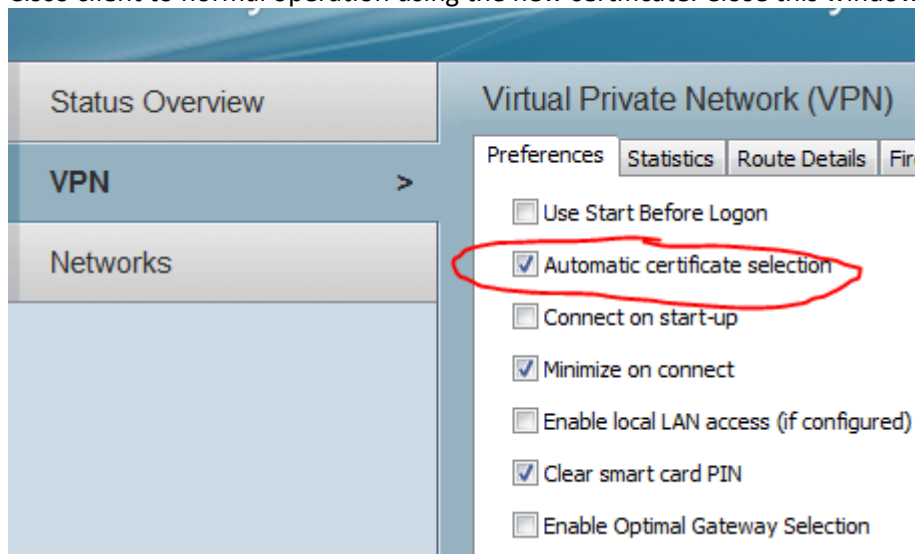


8). Enter your PIN (from the previous step) and Click <OK> or press the <Enter> key on your keyboard to connect:



Your HRA AnyConnect client should now attempt to connect to the Honeywell network.

9). Once connected with the new PKI 2 certificate, you will need to re-enable the Automatic Certificate selection to return the Cisco client to normal operation using the new certificate. Close this window and disconnect to save the configuration setting.



This completes the HON Public Identity enrollment and post enrollment and HRA configuration process.